

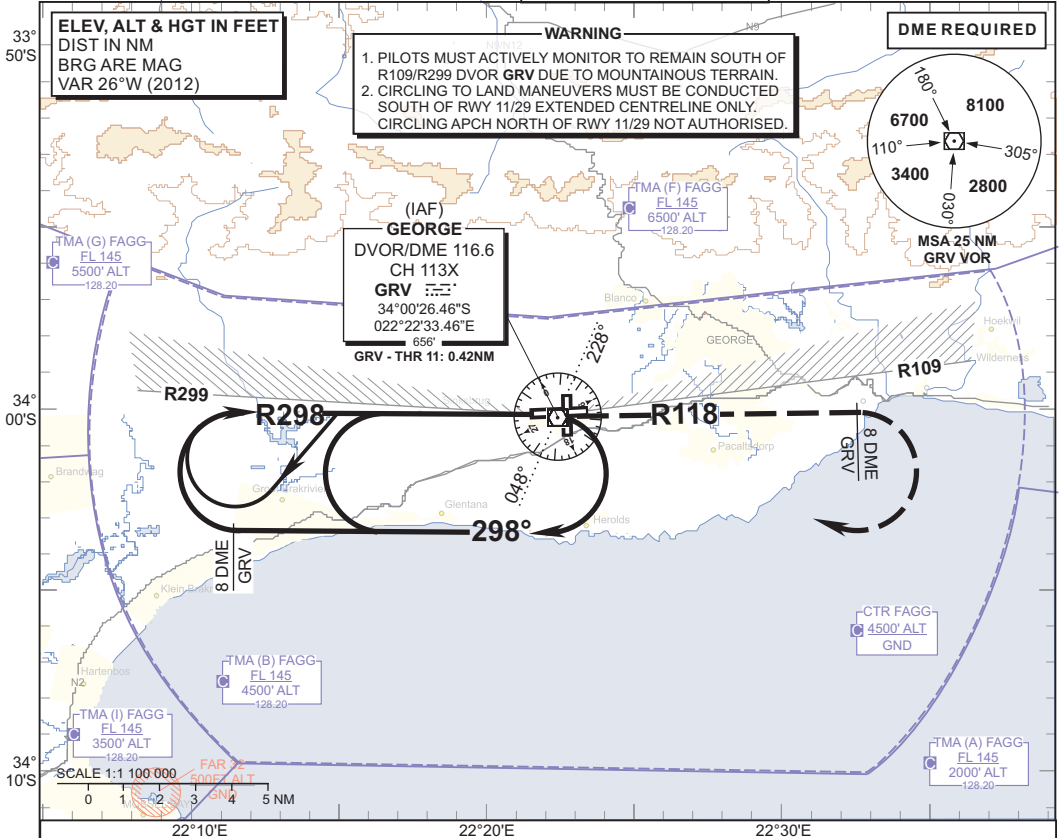
**INSTRUMENT
APPROACH
CHART**

AERODROME ELEV 648'
HEIGHTS RELATED TO
THR RWY 11 - ELEV 622'

GEORGE APP: 128.20
TWR: 118.90
ALPHA OSCAR (APN): 122.65
ATIS: 126.225



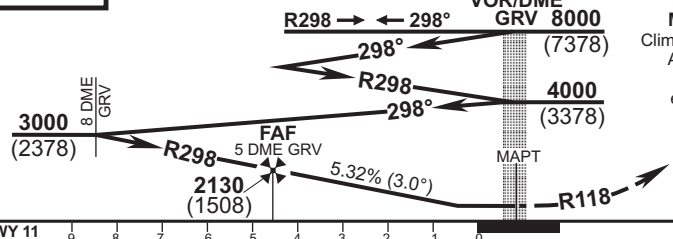
GEORGE
VOR RWY 11
CAT A - D



GRV VOR/DME	5	4	3			
ALT (HGT)	2130 (1508)	1810 (1188)	1490 (868)			

TRANSITION ALT 8000
TRANSITION LEVEL ATC

INA ALT: 8000 or higher MSA



MISSED APPROACH:
Climb on R118 to 4000' ALT.
At 8 DME GRV turn right
and return to GRV, and
enter hold or as directed
by ATC.

THR ELEV 622
NM to/from THR RWY 11

	9	8	7	6	5	4	3	2	1	0
--	---	---	---	---	---	---	---	---	---	---

CHANGE: Rate of descent	OCA (H)	A	B	C	D	GS	KT	80	100	120	140	160
	Straight-in Approach	VOR/DME 1200 (578)				5 DME GRV - THR	M:S	3:23	2:43	2:15	1:56	1:42
	Circling	Circle to land South of RWY 11/29 extended centreline only				Rate of descent	FPM	431	538	646	754	861
						NOTE:	1. Descend in the hold to 4000' ALT. 2. Procedure turn approach applicable only within 30° of the outbound heading. Use phraseology "Request procedure turn approach". 3. Circle to land at the discretion of the pilot in command.					